

AEEF [B3] 系列

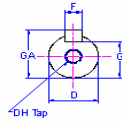
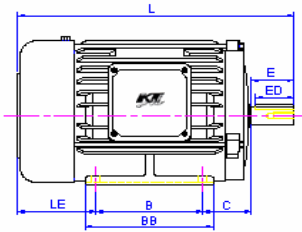


Fig. 1

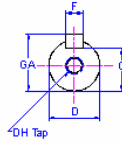
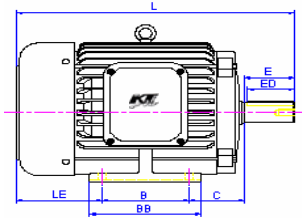
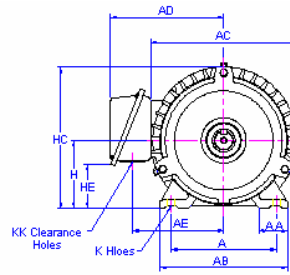


Fig. 2

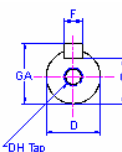
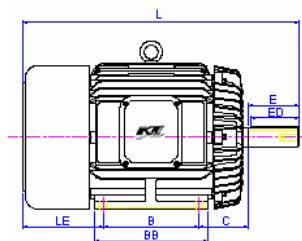
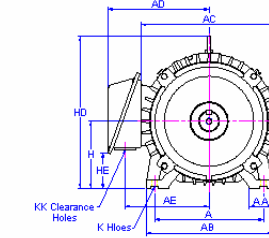
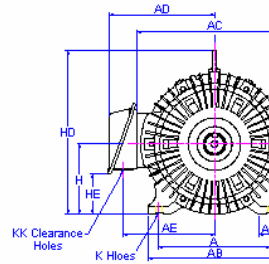


Fig. 3



Outline Dimensions 外型尺寸圖

Specification 規格			AEEF [B3] Foot Mounted Series (臥式)																			
Output(HP)輸出			Frame No.	Fig.No.	A	AA	AB	AC	AD	AE	B	BB	C	H	HA	HC	HD	HE	K	KK	L	LE
2P	4P	6P	框號	圖示	100	28	120	144	123	93	80	100	40	63	8	135	-	29	7	22	219	76
0.25	0.25	-	63	1	112	35.5	140	162	133	103	90	115	45	71	8	152	-	54	7	22	250.5	85.5
1	1	0.5	80	1	125	35.5	155	177	144	112	100	130	50	80	9	168.5	-	55	10	22	282.5	92.5
2 / 3	2	1	90L	1	140	35.5	170	200	157	125	125	150	56	90	10	190	-	65	10	22	332.5	101.5
-	3	2	100L	2	160	45	195	219	180	145	140	175	63	100	12.5	-	243	71	12	28	374.5	111.5
5	5	3	112M	2	190	45	224	235	189	154	140	175	70	112	14	-	265	83	12	28	391.5	121.5
7.5 / 10	7.5	5	132S	2	216	45	250	273	225	180	140	175	89	132	16	-	310	83	12	35	454	145
-	10	7.5	132M	2	216	45	250	273	225	180	178	212	89	132	16	-	310	83	12	35	492	145
15 / 20	15	10	160M	3	254	50	300	334	263	218	210	250	108	160	18	-	377	108	14.5	35	608	180
25	20	15	160L	3	254	50	300	334	263	218	254	300	108	160	18	-	377	108	14.5	35	652	180
30	-	-	180M	3	279	75	355	382	305	250	241	297	121	180	20	-	421	119	14.5	52	672	200
-	25 / 30	20	180M	3	279	75	355	382	305	250	241	297	121	180	20	-	421	119	14.5	52	672	200
40	-	-	180L	3	279	75	355	382	305	250	279	335	121	180	20	-	421	119	14.5	52	710	200
-	40	25 / 30	180L	3	279	75	355	382	305	250	279	335	121	180	20	-	421	119	14.5	52	710	200

Specification 規格			Shaft end (軸端)									Bearing (軸承)		Appro.Weight
Output(HP)輸出			Frame No.	Fig.No.	D	E	ED	F	G	GA	DH	Load Side	Anti-Load Side	概略重量
2P	4P	6P	框號	圖示								負載側	反負載側	kgs
0.25	0.25	-	63	1	11	23	18	4	8.5	12.5	M4*8	6201zz	6201zz	8
0.5	0.5	0.25	71	1	14	30	25	5	11	16	M5*10	6203zz	6202zz	11
1	1	0.5	80	1	19	40	35	6	15.5	21.5	M6*12	6204zz	6203zz	15
2 / 3	2	1	90L	1	24	50	45	8	20	27	M8*16	6205zz	6204zz	22
-	3	2	100L	2	28	60	55	8	24	31	M10*20	6206zz	6205zz	35
5	5	3	112M	2	28	60	55	8	24	31	M10*20	6306zz	6305zz	40
7.5 / 10	7.5	5	132S	2	38	80	75	10	33	41	M12*24	6308zz	6306zz	60
-	10	7.5	132M	2	38	80	75	10	37	41	M12*24	6308zz	6306zz	70
15 / 20	15	10	160M	3	42	110	105	12	37	45	M16*32	6309zz	6307zz	115
25	20	15	160L	3	42	110	105	12	37	45	M16*32	6309zz	6307zz	135
30	-	-	180M	3	48	110	105	14	42.5	51.5	M16*32	6311zz	6310zz	180
-	25 / 30	20	180M	3	48	110	105	14	42.5	51.5	M16*32	6311zz	6310zz	220
40	-	-	180L	3	55	110	105	16	49	59	M20*40	6312zz	6310zz	240
-	40	25 / 30	180L	3	55	110	105	18	49	59	M20*40	6312zz	6310zz	250

備註(Remark) : 1.軸心直徑 "D" 公差(Tolerance of Shaft dia "D"):Φ11~Φ28:j6,Φ38~Φ48:k6,Φ55~Φ95:m6
 2.臥式(Foot mounted):軸中心高 "H" 公差(Tolerance of shaft centre height "H")+0,-0.5
 3.以上數值如變更,恕不另行通知(All data subject to change without prior notice)